

User Manual

(Implementation Guide)

UN/EDIFACT MESSAGE

COPINO

(Container Pre-notification)

Version

Version : borrador v0.2
Date : 08/10/2008
Source :

CONTENTS

0. INTRODUCTION	3
1. GENERAL	3
2. STATUS INDICATORS AND USAGE INDICATORS	3
3. DOCUMENT MAINTENANCE	3
4. SEGMENT TABLE	3
5. MESSAGE STRUCTURE DIAGRAM	5
6. MESSAGE DESCRIPTION	8
UNB Interchange Header.....	8
UNH Message Header.....	9
BGM Beginning of Message.....	10
DTM Date/Time/Period	11
RFF Reference.....	12
TDT Details of Transport.....	13
LOC Place/Location Identification.....	14
DTM Date/Time/Period	15
NAD Name and Address.....	16
EQD Equipment Details.....	17
RFF Reference.....	18
MEA Measurements.....	19
DIM Dimensions	20
FTX Free Text.....	21
SEL Seal Number.....	22
EQA Attached Equipment	23
HAN Handling Instructions.....	24
TDT Details of Transport.....	25
LOC Place/Location Identification.....	26
NAD Name and Address.....	27
DGS Dangerous Goods	28
TMP Temperature	29
CNT Control Total	30
UNT Message Trailer.....	31
UNZ Interchange Trailer	32
7. SAMPLE MESSAGE	33
8. MAESTROS ATM.....	34

0. INTRODUCTION

1. GENERAL

2. STATUS INDICATORS AND USAGE INDICATORS

3. DOCUMENT MAINTENANCE

4. SEGMENT TABLE

COPINO Container Pre-notification Message

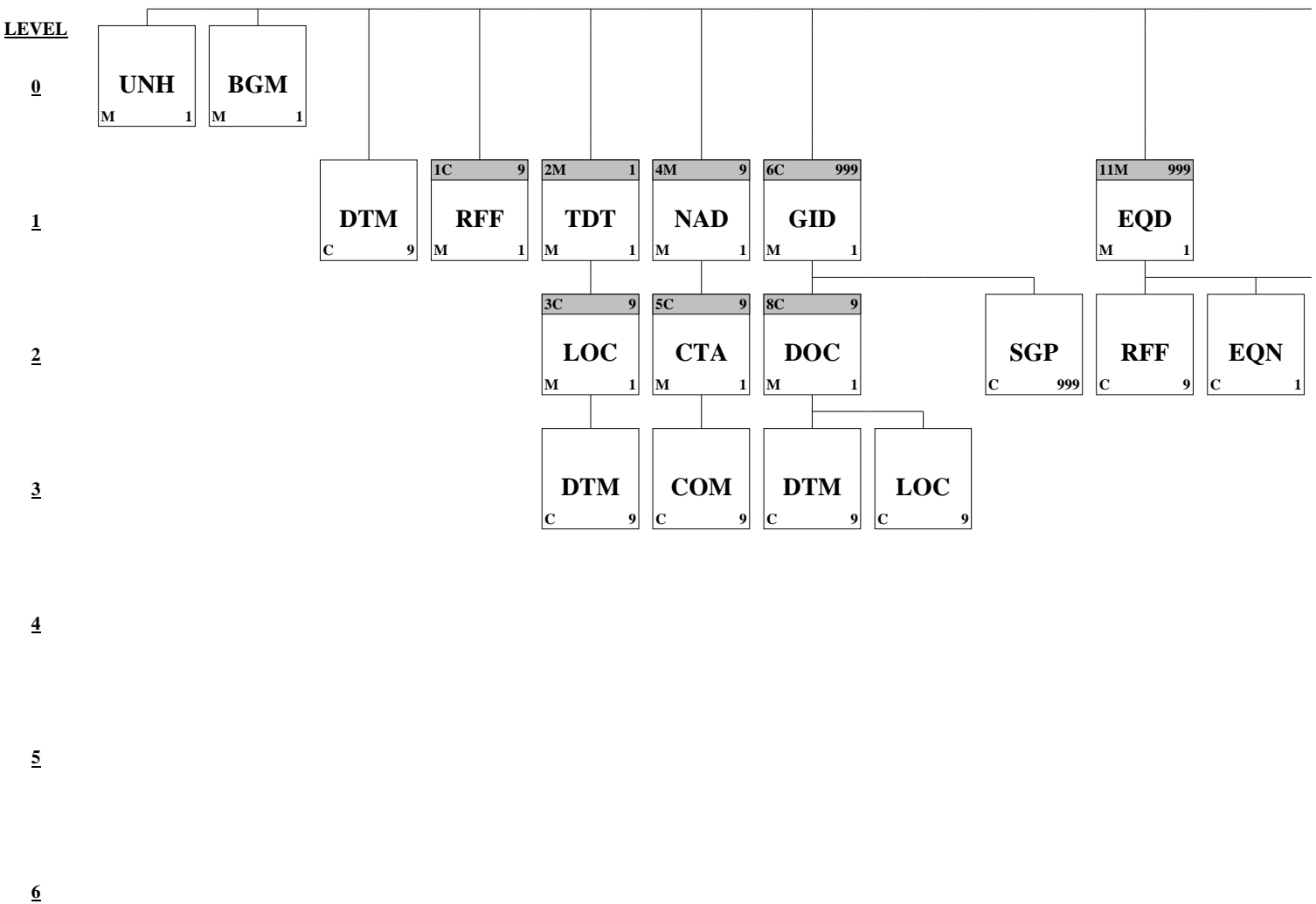
Introduction: The format is a COPINO message subset.

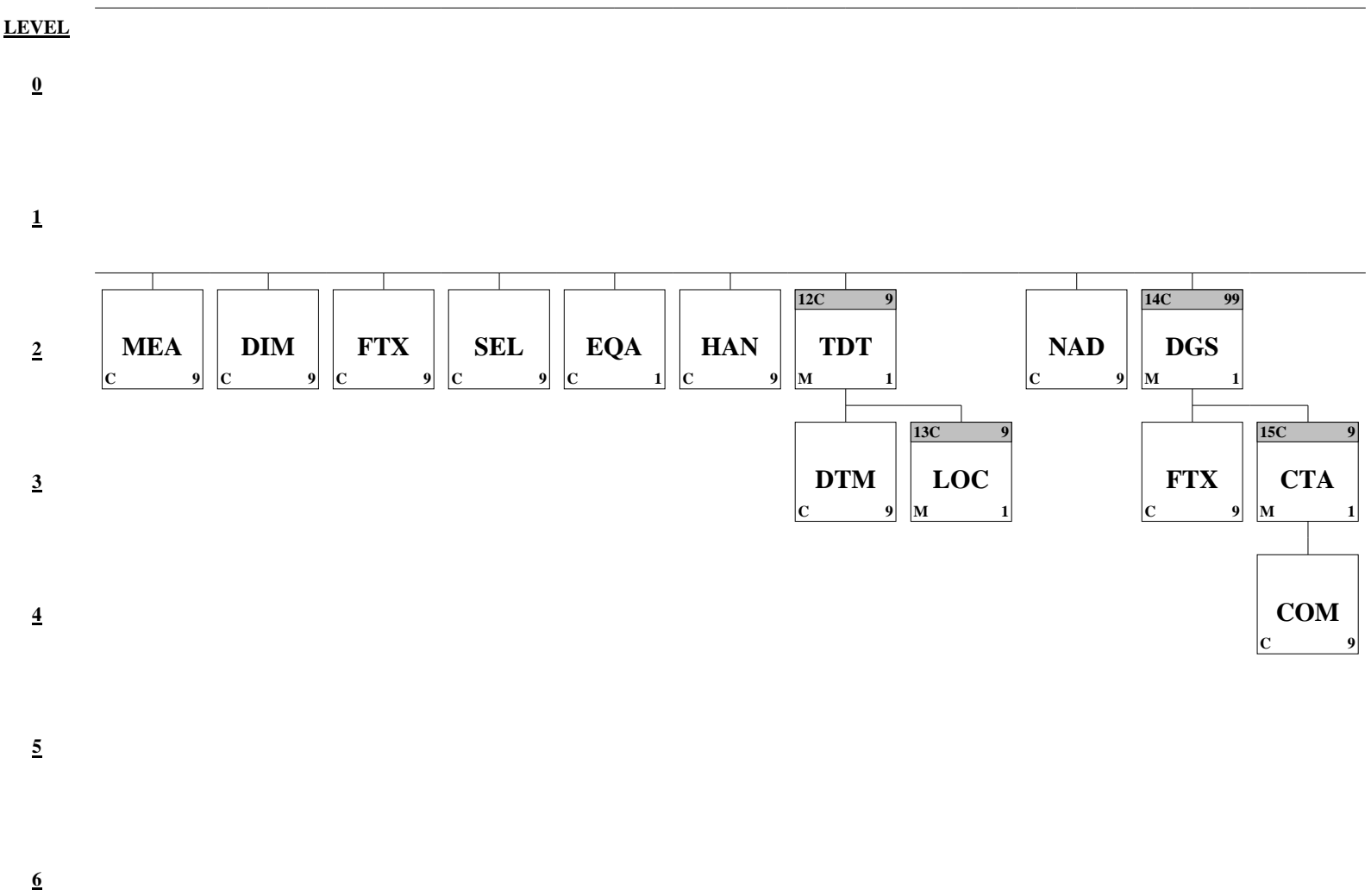
A message by which an inland carrier notifies of the delivery or pick-up of containers. This message is part of a total set of container-related messages. These messages serve to facilitate the intermodal handling of containers by streamlining the information exchange. The business scenario for the container messages is clarified in a separate document, called: 'Guide to the scenario of EDIFACT container messages'.

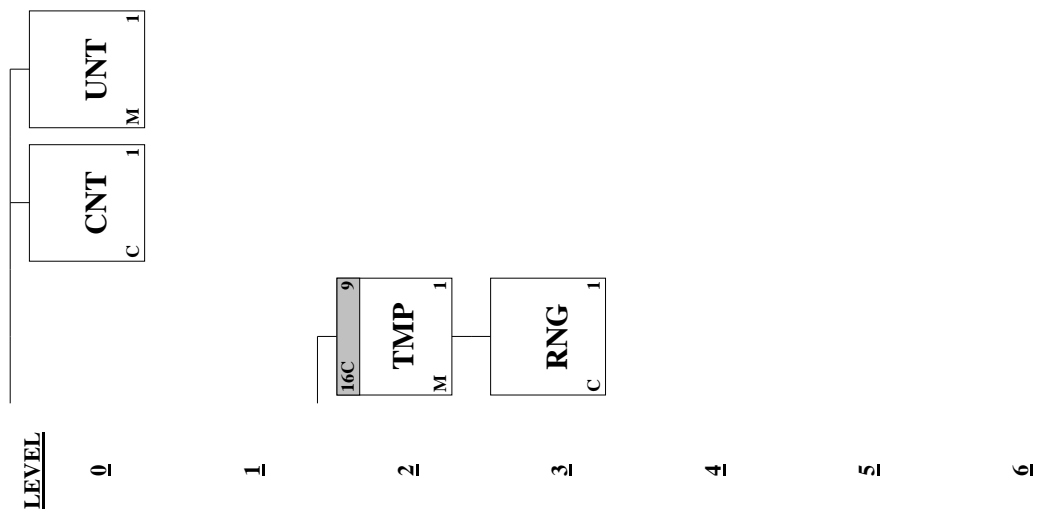
	Pos. No.	Seg. ID	Name	Req. Des.	Max.Use	Group Repeat	Notes and Comments
M	0000	UNB	Interchange Header	M	1		
M	0010	UNH	Message Header	M	1		
M	0020	BGM	Beginning of Message	M	1		
O	0030	DTM	Date/Time/Period	C	9		
O	0050		Segment Group 1: RFF	C		9	
D	0060	RFF	Reference	D	1		
M	0080		Segment Group 2: TDT-SG3	M		1	
M	0090	TDT	Details of Transport	M	1		
O	0110		Segment Group 3: LOC-DTM	C		9	
M	0120	LOC	Place/Location Identification	M	1		
O	0130	DTM	Date/Time/Period	C	9		
M	0140		Segment Group 4: NAD-SG5	M		9	
M	0150	NAD	Name and Address	M	1		

M	0370		Segment Group 11: EQD-RFF-MEA-DIM-FTX-SEL-EQA-HAN-SG12-NAD-SG14-SG16	M	999
M	0380	EQD	Equipment Details	M	1
O	0390	RFF	Reference	C	9
O	0410	MEA	Measurements	C	9
O	0420	DIM	Dimensions	C	9
O	0430	FTX	Free Text	C	9
O	0450	SEL	Seal Number	C	9
O	0460	EQA	Attached Equipment	C	9
O	0470	HAN	Handling Instructions	C	9
O	0480		Segment Group 12: TDT-SG13	C	9
M	0490	TDT	Details of Transport	M	1
O	0510		Segment Group 13: LOC	C	9
M	0520	LOC	Place/Location Identification	M	1
O	0540	NAD	Name and Address	C	9
O	0550		Segment Group 14: DGS-FTX-SG15	C	99
M	0560	DGS	Dangerous Goods	M	1
O	0620		Segment Group 16: TMP	C	9
M	0630	TMP	Temperature	M	1
O	0650	CNT	Control Total	C	1
M	0660	UNT	Message Trailer	M	1
M	0670	UNZ	Interchange Trailer	M	1

5. MESSAGE STRUCTURE DIAGRAM







6. MESSAGE DESCRIPTION

UNB Interchange Header

Position: 0000
Group:
Level: 0
Usage: Mandatory
Max Use: 1
Purpose: The UNB segment is used to head, identify and specify an interchange
Comments:
Notes: *Sample segment :*
 UNB+UNOA:2+Q4867002J+A95095691+080108:1531+APBE08000012'

Data Element Summary

	Data Element	Component Element Name		
Attributes				
M	S001	SYNTAX IDENTIFIER	1	
		0001 Syntax identifier	M	an..4
		<i>'UNOA', indicating the use of level 'A' character set.</i>		
		0002 Syntax version number	M	1 n..1
		2		
M	S002	INTERCHANGE SENDER		
		0004 Sender identification: name code of the message sender.	M	1 an...35
		<i>CIF empresa transportista (Carrier VAT number)</i>		
M	S003	INTERCHANGE RECIPIENT		
M		0010 Recipient identification: name code of the message recipient.	M	an..35
		<i>CIF terminal (Terminal VAT number)</i>		
M	S004	DATE AND TIME OF PREPARATION		
M		0017 Date of preparation: (format YYMMDD)	M	n..6
M		0019 Time of preparation: (format HHMM)	M	n..4
M		0020 INTERCHANGE CONTROL REFERENCE: a reference allocated by the sender, uniquely identifying the interchange. This reference must also be transmitted in the UNZ segment.	M	an..14

UNH Message Header

Position: 0010
Group:
Level: 0
Usage: Mandatory
Max Use: 1
Purpose: A service segment starting and uniquely identifying a message. The message type code for the Container pre-notification message is COPINO. Note: Container pre-notification messages conforming to this document must contain the following data in segment UNH, composite S009:
 Data element 0065 COPINO 0052 D 0054 00B 0051 UN

Comments:

Notes: *Sample segment :*
 UNH+APBE08000012+COPINO:D:00B:UN:SMDG20'

Data Element Summary

		Data Element	Component Element Name			
		<u>Element</u>	<u>Element Name</u>			
<u>Attributes</u>						
M	0062	MESSAGE REFERENCE NUMBER		M	1	an..14
<i>Unique message reference assigned by the sender.</i>						
<i>This reference must also be transmitted in the UNT segment.</i>						
M	S009	MESSAGE IDENTIFIER		M	1	
M	0065	Message type identifier		M		an..6
<i>COPINO Container pre-notification message</i>						
M	0052	Message type version number		M		an..3
<i>D Draft version/UN/EDIFACT Directory</i>						
M	0054	Message type release number		M		an..3
<i>00B Release 2000 - B</i>						
M	0051	Controlling agency		M		an..2
<i>UN UN/CEFACT</i>						
O	0057	Association assigned code		C		an..6
<i>SMDG20 SMDG Version 2.0</i>						

BGM Beginning of Message

Position: 0020
Group:
Level: 0
Usage: Mandatory
Max Use: 1
Purpose: A segment to indicate the beginning of a message and to transmit identifying number and the further specification of the message type (in data element 1001: Document name code), such as Pick-up notice, Arrival notice.

Comments:

Notes: *Sample segment :*
BGM+104+APBE08000012+9'

Data Element Summary

	Data Element	Component Element	Name		
Attributes					
R	C002		DOCUMENT/MESSAGE NAME	C	1
R		1001	Document name code	C	an..3
		104	Transport equipment impending arrival advice <i>(Exportación)</i>		
		171	Pick-up notice <i>(Importación)</i>		
R	C106		DOCUMENT/MESSAGE IDENTIFICATION	C	1
R		1004	Document identifier <i>Sender's unique reference number</i>	C	an..35
R	1225		MESSAGE FUNCTION CODE	C	1 an..3
			<i>If code 1 or 5 is used, reference number of the message which is being cancelled/replaced must appear in the header level RFF using the code ACW in e1153.</i>		
		1	Cancellation		
		5	Replace		
		9	Original		

DTM Date/Time/Period

Position: 0030
Group:
Level: 1
Usage: Conditional (Optional)
Max Use: 9
Purpose: A segment to indicate a date and/or time applying to the whole message, such as date and time of document or message issue.

Comments:

Notes: *Sample segment :*
DTM+137:200211211523:203'

Data Element Summary

<u>Attributes</u>	<u>Data Element</u>	<u>Component Element</u>	<u>Name</u>		
M	C507		DATE/TIME/PERIOD	M	1
M		2005	Date or time or period function code qualifier 137 Document/message date/time	M	an..3
R		2380	Date or time or period value Date/time that the message was prepared.	C	an..35
R		2379	Date or time or period format code 203 CCYYMMDDHHMM	C	an..3

RFF Reference

Position: 0060 (Trigger Segment)
Group: Segment Group 1 (Reference) Conditional (Optional)
Level: 1
Usage: Mandatory
Max Use: 1
Purpose: A segment to express a reference which applies to the entire message, such as: - reference to previous message - container pre-notification reference number

Comments:

Notes: *Sample segment :*
RFF+ACW: APBE08000011'

Data Element Summary

	Data Element	Component Element	Name		
<u>Attributes</u>					
M	C506		REFERENCE	M	1
D		1153	Reference code qualifier <i>ACW Reference number to previous message</i>	D	an..3
R		1154	Reference identifier <i>Reference number</i> <i>(BGM.1004 del mensaje COPINO Original)</i>	C	an..70

TDT Details of Transport

Position: 0090 (Trigger Segment)
Group: Segment Group 2 (Details of Transport) Mandatory
Level: 1
Usage: Mandatory
Max Use: 1
Purpose: A segment to indicate information related to the inland transport stage (road, rail or inland water), such as mode, voyage number/indication inland transport, identification and type of transport means and inland carrier.

Comments:

Notes: *Sample segment :*
TDT+1++3+++++BI2345CD'

Data Element Summary

		Data Component		
		Element	Element Name	
Attributes				
M	8051	TRANSPORT STAGE CODE QUALIFIER	M	1 an..3
		<i>1 Rueda Interna</i>		
		<i>10 Export (Exportación)</i>		
		<i>13 Storage</i>		
		<i>30 Import (Importación)</i>		
X	8028	MEANS OF TRANSPORT JOURNEY IDENTIFIER	C	1 an..17
O	C220	MODE OF TRANSPORT	C	1
O	8067	Transport mode name code	C	an..3
		<i>2 Rail</i>		
		<i>3 Road</i>		
X	C228	TRANSPORT MEANS	C	1
X	C040	CARRIER	C	1
X	8101	TRANSIT DIRECTION INDICATOR CODE	C	1 an..3
X	C401	EXCESS TRANSPORTATION INFORMATION	C	1
O	C222	TRANSPORT IDENTIFICATION	C	1
O	8213	Transport means identification name identifier	C	an..9

(if 8067 = 2) Train ID/Number (Nº Reserva Carga)
(if 8067 = 3) Truck ID/Number (matricula)

LOC Place/Location Identification

Position: 0120 (Trigger Segment)
Group: Segment Group 3 (Place/Location Identification) Conditional (Optional)
Level: 2
Usage: Mandatory
Max Use: 1
Purpose: A segment to indicate locations such as place or port of arrival.
Comments:
Notes: *Sample segment :*
LOC+60+ESBIO:139:6+A95095691:72'

Data Element Summary

<u>Attributes</u>	<u>Data Element</u>	<u>Component Element Name</u>			
M	3227	LOCATION FUNCTION CODE QUALIFIER 60 Place of arrival	M	1	an..3
R	C517	LOCATION IDENTIFICATION	C	1	
O		3225 Location name code <i>UNLOCODE</i>	C		an..25
O		1131 Code list identification code 139 Port	C		an..17
O		3055 Code list responsible agency code 6 UN/ECE	C		an..3
O		3224 Location name <i>Port name (free text)</i>	C		an..256
O	C519	RELATED LOCATION ONE IDENTIFICATION	C	1	
O		3223 First related location name code <i>1st related location code</i> <i>(CIF Terminal Contenedores)</i>	C		an..25
O		1131 Code list identification code 72 Container terminal	C		an..17

DTM Date/Time/Period

Position: 0130
Group: Segment Group 3 (Place/Location Identification) Conditional (Optional)
Level: 3
Usage: Conditional (Optional)
Max Use: 9
Purpose: A segment to indicate the arrival date and time of an inland means of transport, such as: - arrival date/time, estimated.

Comments:

Notes: *Sample segment :*
DTM+132:200212290600:203'

Data Element Summary

	Data Element	Component Element	Name		
Attributes					
M	C507		DATE/TIME/PERIOD	M	1
M		2005	Date or time or period function code qualifier	M	an..3
			132 <i>Arrival date/time, estimated</i>		
			232 <i>Llegada al control E/S del Puerto de Bilbao</i>		
			<i>Transport means arrival date/time, scheduled</i>		
			<i>Llegada a la terminal</i>		
R		2380	Date or time or period value	C	an..35
			<i>Arrival date/time</i>		
R		2379	Date or time or period format code	C	an..3
			203 <i>CCYYMMDDHHMM</i>		

NAD Name and Address

Position: 0150 (Trigger Segment)
Group: Segment Group 4 (Name and Address) Mandatory
Level: 1
Usage: Mandatory
Max Use: 1
Purpose: A segment to identify the party's name and address, and function, such as:
 - message recipient - message sender

Comments:

Notes: *Sample segment :*
NAD+MS+F48116032'

Data Element Summary

	Data Element	Component Element Name			
M	3035	PARTY FUNCTION CODE QUALIFIER	M	1	an..3
		<i>MS Document/message issuer/sender</i>			
O	C082	PARTY IDENTIFICATION DETAILS	C	1	
M		3039 Party identifier	M		an..35
		Company code – CIF Emisor Transportista, es obligatorio			

El primer NAD codificado por el CIF de la empresa Transportista llevará el calificador MS – **Emisor transportista y es un segmento obligatorio.**

EQD Equipment Details

Position: 0380 (Trigger Segment)
Group: Segment Group 11 (Equipment Details) Mandatory
Level: 1
Usage: Mandatory
Max Use: 1
Purpose: A segment to specify a container, size and type used in the transport and full/empty indication; also to specify the type of rail car on which a related container is transported.

Comments:

Notes: *Sample segment :*
EQD+CN+MAEU6406993+42G1:102:5+++5'

Data Element Summary

Attributes	Data Element	Component Element	Name			
M	8053		EQUIPMENT TYPE CODE QUALIFIER	M	1	an..3
			<i>BB Break bulk - Mercancía General</i>			
			<i>CN Container con matrícula estándar</i>			
			<i>SW Swap body con matrícula libre</i>			
			GS Granel Sólido			
			GL Granel Líquido			
R	C237		EQUIPMENT IDENTIFICATION	C	1	
O		8260	Equipment identifier	C		an..17
			<i>Marks (letters/numbers) identifying equipment. To be transmitted as they appear on the equipment.</i>			
			<i>Sí 8053 = BB, GS ó GL -> En Blanco</i>			
			<i>Sí 8053 = CN -> Se validará que conste de 4 caracteres + 7 dígitos ó 1 carácter + 1 ó 2 dígitos para cisternas</i>			
			<i>Sí 8053 = SW -> No se realizará ninguna validación sobre la matrícula</i>			
D	C224		EQUIPMENT SIZE AND TYPE	C	1	
O		8155	Equipment size and type description code	C		an..10
			<i>Equipment size/type code as per ISO6346 (.1 or.2, .2 preferred)</i>			
			<i>Se validará en función de las dos últimas cifras en codificación ISO6346 e ISO6346:1995 si son cisternas.</i>			
			<i>Sí 8053 = BB, GS ó GL -> En Blanco</i>			
O		1131	Code list identification code	C		an..17
			<i>102</i>			
O		3055	Code list responsible agency code	C		an..3
			<i>5 ISO (International Organization for Standardization)</i>			
O	8077		EQUIPMENT SUPPLIER CODE	C	1	an..3
O	8249		EQUIPMENT STATUS CODE	C	1	an..3
R	8169		FULL OR EMPTY INDICATOR CODE	C	1	an..3
			<i>4 Empty</i>			
			<i>5 Full</i>			
			<i>6 No volume available</i>			
			To be used in case of breakbulk - Mercancía General, Granel Sólido y Granel Líquido.			

RFF Reference

Position: 0390
Group: Segment Group 11 (Equipment Details) Mandatory
Level: 2
Usage: Conditional (Optional)
Max Use: 9
Purpose: A segment to specify the identifying number associated with the container, such as: - container sequence number - container announcement reference number - referring container sequence number - release order reference number - acceptance order reference

Comments:

Notes: *Sample segment :*
RFF+BN:ROTA12786'

Data Element Summary

		Data Component		
		Element	Element Name	
Attributes				
M	C506	REFERENCE		M 1
M		1153	Reference code qualifier	M an..3
			BN Booking reference number (Booking marítimo)	
			CN Carrier's reference number (Referencia del Transportista)	
			CU Consignor's reference number (Nº Entréguese/Admitase)	
R		1154	Reference identifier Reference number	C an..70

Para ATM es obligatoria una ocurrencia con el calificador RFF.C506.1153 = CN - Referencia Transportista.

No se va a admitir un COPINO con segmento EQN, se deben enviar tantos segmentos EQD como equipamientos haya, aunque sean Vacíos y sin matricula.

MEA Measurements

Position: 0410
Group: Segment Group 11 (Equipment Details) Mandatory
Level: 2
Usage: Conditional (Optional)
Max Use: 9
Purpose: A segment to specify measurement, other than dimensions, associated with the container, such as: - gross weight
Comments:
Notes: *Sample segment :*
MEA+AAE+AET+KGM:10474'

Data Element Summary

	Data Element	Component Element Name			
Attributes					
M	6311	MEASUREMENT PURPOSE CODE QUALIFIER	M	1	an..3
		<i>AAE Measurement</i>			
R	C502	MEASUREMENT DETAILS	C	1	
R	6313	Measured attribute code	C		an..3
		<i>G Gross weight (Peso Bruto Mercancía)</i>			
R	C174	VALUE/RANGE	C	1	
M	6411	Measurement unit code	M		an..3
		<i>KGM Kilograms</i>			
R	6314	Measurement value	C		an..18
		<i>Weight</i>			

DIM Dimensions

Position: 0420
Group: Segment Group 11 (Equipment Details) Mandatory
Level: 2
Usage: Conditional (Optional)
Max Use: 9
Purpose: A segment to specify dimensions applicable to the container, such as: - external equipment dimensions
Comments:
Notes: *Sample segment :*
DIM+7+CMT::20'

Data Element Summary

		Data Element	Component Element Name		
Attributes					
M	6145	DIMENSION TYPE CODE QUALIFIER		M	1 an..3
		1	Gross dimensions <i>To be used for breakbulk only</i>		
		5	Off-standard dimension front		
		6	Off-standard dimension back		
		7	Off-standard dimension right		
		8	Off-standard dimension left		
		13	Off-standard dimensions height		
M	C211	DIMENSIONS		M	1
M		6411 Measurement unit code		M	an..3
		CMT	Centimetre		
D		6168 Length dimension value		C	n..15
			<i>Overall length if e6145 = 1</i> <i>Overlength if e6145 = 5 or 6</i>		
D		6140 Width dimension value		C	n..15
			<i>Overall width if e6145 = 1</i> <i>Overwidth if e6145 = 7 or 8</i>		
D		6008 Height dimension value		C	n..15
			<i>Overall height if e6145 = 1</i> <i>Overheight if e6145 = 13</i>		

FTX Free Text

Position: 0430
Group: Segment Group 11 (Equipment Details) Mandatory
Level: 2
Usage: Conditional (Optional)
Max Use: 9
Purpose: A segment to provide processable supplementary information associated with the equipment such as controlled atmosphere particulars.

Comments:

Notes: *Sample segment :*
FTX+AAI+++Observaciones a Terminal'

Data Element Summary

	Data Element	Component Element Name			
M	4451	TEXT SUBJECT CODE QUALIFIER	M	1	an..3
		AAI General information (Observaciones a Terminal)			
		ABS Additional conditions (Observaciones a Seg. Portuaria)			
		DAR Damage remarks			
D	4441	Free text value code	D		an..17
		<i>Indication of damage condition (if e4451 = DAR) :</i>			
		6 Not damaged			
		8 Damaged			
D	C108	TEXT LITERAL	C	1	
M	4440	Free text value	M		an..512
		<i>Free text</i>			
O	4440	Free text value	C		an..512
O	4440	Free text value	C		an..512
O	4440	Free text value	C		an..512
O	4440	Free text value	C		an..512

SEL Seal Number

Position: 0450
Group: Segment Group 11 (Equipment Details) Mandatory
Level: 2
Usage: Conditional (Optional)
Max Use: 9
Purpose: A segment to identify seal and seal issuer associated with the container, such as shipper, consolidator, carrier (sea) and Customs.
Proposito: *Numero de precinto*
Comments:
Notes: *Sample segment :
SEL+87579855'*

Data Element Summary

<u>Attributes</u>	<u>Data Element</u>	<u>Component Element</u>	<u>Name</u>		
R	9308		SEAL IDENTIFIER <i>Seal number</i>	C	1 an..35

EQA Attached Equipment

Position: 0460
Group: Segment Group 11 (Equipment Details) Mandatory
Level: 2
Usage: Conditional (Optional)
Max Use: 1
Purpose: A segment to identify related container and means of transport details (rail), such as: - rail car (to relate to the 'rail car'-qualified EQD- group)
Comments:
Notes: *Sample segment :*
EQA+RR+MAEG100048'

Data Element Summary

		Data	Component		
		<u>Element</u>	<u>Element Name</u>		
Attributes					
M	8053	EQUIPMENT TYPE CODE QUALIFIER		M	1 an..3
		<i>RR</i>	<i>Rail car</i>		
O	C237	EQUIPMENT IDENTIFICATION		C	1
R	8260	Equipment identifier		C	an..17
		Equipment number			

HAN Handling Instructions

Position: 0470
Group: Segment Group 11 (Equipment Details) Mandatory
Level: 2
Usage: Conditional (Optional)
Max Use: 9
Purpose: A segment to specify handling instructions related to the container equipment.

Comments:

Notes: *Sample segment :*
HAN+OD:130:184'

Data Element Summary

	Data Element	Component Element	Name		
Attributes					
R	C524		HANDLING INSTRUCTIONS	C	1
O		4079	Handling instruction description code	C	an..3
			<i>'OD' - Over Deck</i>		
			<i>'UD' - Under Deck</i>		
			<i>'SL' - Eslingas</i>		
O		1131	Code list identification code	C	an..17
			<i>130 Special handling</i>		
O		3055	Code list responsible agency code	C	an..3
			<i>184 AU, ACOS (Australian Chamber of Shipping)</i>		

TDT Details of Transport

Position: 0490 (Trigger Segment)
Group: Segment Group 12 (Details of Transport) Conditional (Optional)
Level: 2
Usage: Mandatory
Max Use: 1
Purpose: A segment to indicate information related to the main carriage stage of the transport (sea), such as carrier or liner service: - main carriage (sea)
Comments:
Notes: *Sample segment :*
TDT+20++1+++++8212661:146:SL PRIDE:US'
TDT+20++1+++++8212661'

Data Element Summary

	Data Element	Component Element Name		
Attributes				
M	8051	TRANSPORT STAGE CODE QUALIFIER	M	1 an..3
		<i>20 Main-carriage transport</i>		
X	8028	MEANS OF TRANSPORT JOURNEY IDENTIFIER	C	1 an..17
R	C220	MODE OF TRANSPORT	C	1
R	8067	Transport mode name code	C	an..3
		<i>1 Maritime</i>		
		<i>3 Road</i>		
X	C228	TRANSPORT MEANS	C	1
X	C040	CARRIER	C	1
X	8101	TRANSIT DIRECTION INDICATOR CODE	C	1 an..3
X	C401	EXCESS TRANSPORTATION INFORMATION	C	1
O	C222	TRANSPORT IDENTIFICATION	C	1
O	8213	Transport means identification name identifier	C	an..9
		<i>Lloyds Number (if 8067 = 1 and C222/1131 = 146)</i>		
		<i>Truck number plate (if 8067 = 3)</i>		
O	1131	Code list identification code	C	an..17
		<i>146 Means of transport identification</i>		
O	8212	Transport means identification name	C	an..35
		<i>Name of Means of Transport (free text)</i>		
		<i>Sí 8067=1 -> Vessel name (free text)</i>		
O	8453	Transport means nationality code	C	an..3
		<i>Sí 8067=1 -> Flag of Means of Transport (ISO Country Code)</i>		

LOC Place/Location Identification

Position: 0520 (Trigger Segment)
Group: Segment Group 13 (Place/Location Identification) Conditional
 (Optional)
Level: 3
Usage: Mandatory
Max Use: 1
Purpose: A segment to indicate locations such as (final) discharge ports: - final place or port of discharge
Comments:
Notes: *Sample segment :*
LOC+7+DEFRA:139:6' localidad destino exportacion
LOC+11+DEHAM:139:6' puerto descarga exportacion

Data Element Summary

		Data Component		
		Element	Element Name	
Attributes				
M	3227	LOCATION FUNCTION CODE QUALIFIER	M	1 an..3
		7	Place of delivery (Exportación)	
		8	Place of destination (Importación)	
		9	Place/port of loading (Importación)	
		11	Place/port of discharge (Exportación)	
R	C517	LOCATION IDENTIFICATION	C	1
O	3225	Location name code	C	an..25
		UNLOCODE.		
O	1131	Code list identification code	C	an..17
		139	Port	
O	3055	Code list responsible agency code	C	an..3
		6	UN/ECE (United Nations - Economic Commission for Europe)	

Si la Operación es Exportación se podrán especificar los calificadores siguientes:

- 7 - Localidad de entrega en destino
- 11 - Puerto de Descarga

Si la Operación es Importación se podrán especificar los calificadores siguientes:

- 8 - Localidad origen de la mercancía
- 9 - Puerto de Carga

NAD Name and Address

Position: 0540
Group: Segment Group 11 (Equipment Details) Mandatory
Level: 2
Usage: Conditional (Optional)
Max Use: 9
Purpose: A segment to specify a related address or party, such as: - ordering customer (for container announcement) - agent/representative of the ordering customer (for container announcement) - final place of positioning

Comments:

Notes: *Sample segment :*
NAD+CF+A83728279'
NAD+SLS+MSC:172:ZZZ'

Data Element Summary

<u>Attributes</u>	<u>Data Element</u>	<u>Component Element</u>	<u>Name</u>		
M	3035		PARTY FUNCTION CODE QUALIFIER <i>CF Container operator</i> <i>SLS Shipping line service</i>	M	1 an..3
O	C082		PARTY IDENTIFICATION DETAILS	C	1
M		3039	Party identifier Company code Si 3035==CF, CIF agente Si 3035==SLS, Linea según codificación ATM	M	an..35
O		1131	Code list identification code <i>172 Carriers</i>	C	an..17
O		3055	Code list responsible agency code <i>ZZZ Mutually defined</i>	C	an..3

DGS Dangerous Goods

Position: 0560 (Trigger Segment)
Group: Segment Group 14 (Dangerous Goods) Conditional (Optional)
Level: 2
Usage: Mandatory
Max Use: 1
Purpose: A segment to indicate the dangerous goods regulations which apply, the class of dangerous goods, additional dangerous goods codes, the United Nations Dangerous Goods (UNDG) number and the shipment flash point.

Comments:

Notes: *Sample segment :*
DGS+IMD+3'

Data Element Summary

	Data Element	Component Element	Name			
<u>Attributes</u>						
R	8273		DANGEROUS GOODS REGULATIONS CODE <i>IMD IMO IMDG code</i>	C	1	an..3
R	C205		HAZARD CODE	C	1	
M		8351	Hazard identification code	M		an..7

TMP Temperature

Position: 0630 (Trigger Segment)
Group: Segment Group 16 (Temperature) Conditional (Optional)
Level: 2
Usage: Mandatory
Max Use: 1
Purpose: A segment to specify the type of transport related temperature such as storage, transport or operating temperature and also to optionally specify a single value temperature setting.

Comments:

Notes: *Sample segment :*
TMP+2+011:CEL'

Only to be used when a set temperature is to be specified

Data Element Summary

	Data Element	Component Element Name		
M	6245	TEMPERATURE TYPE CODE QUALIFIER 2 <i>Transport temperature</i>	M	1 an..3
R	C239	TEMPERATURE SETTING <i>Only to be used to specify a set temperature.</i>	C	1
R	6246	Temperature value <i>Temperature setting</i>	C	n..15
R	6411	Measurement unit code CEL <i>Celsius</i>	C	an..3

CNT Control Total

Position: 0650
Group:
Level: 0
Usage: Conditional (Optional)
Max Use: 1
Purpose: A segment to specify the number of containers in the message, explicitly given by the sender.
Comments:
Notes: *Sample segment :*
CNT+1:1'
CNT+16:25'

Data Element Summary

<u>Attributes</u>	<u>Data Element</u>	<u>Component Element</u>	<u>Name</u>		
M	C270		CONTROL	M	1
M		6069	Control total type code qualifier 1 <i>Algebraic total of the quantity values in line items in a message</i>	M	an..3
			16 <i>Total number of equipment</i>		
M		6066	Control total value <i>Dummy value of 1 (if e6069 = 1)</i> <i>Number of EQD segments in the message (if e6069 = 16)</i>	M	n..18

UNT Message Trailer

Position: 0660
Group:
Level: 0
Usage: Mandatory
Max Use: 1
Purpose: A service segment ending a message, giving the total number of segments in the message (including the UNH & UNT) and the control reference number of the message.

Comments:

Notes: *Sample segment :*
UNT+28+5389'

Data Element Summary

	<u>Data Element</u>	<u>Component Element</u>	<u>Name</u>			
<u>Attributes</u>						
M	0074		NUMBER OF SEGMENTS IN A MESSAGE <i>Total number of segments in the message</i>	M	1	n..6
M	0062		MESSAGE REFERENCE NUMBER <i>Message reference identical to e0062 in UNH segment</i>	M	1	an..14

UNZ Interchange Trailer

Position: 0670
Group:
Level: 0
Usage: Mandatory
Max Use: 1
Purpose: The UNZ segment is used to finish an interchange.
Comments:
Notes: *Sample segment :*
UNZ+1+APBE08000012'

Data Element Summary

	Data Element	Component Element Name			
Attributes					
M	0036	INTERCHANGE CONTROL NUMBER	M	1	n..6
		<i>Siempre = 1</i>			
M	0020	MESSAGE REFERENCE NUMBER	M	1	an..14
		<i>Message reference identical to e0062 in UNH segment</i>			

7. SAMPLE MESSAGE

UNB+UNOA:2+F48116032+A95095691+080416:1143+CEC0000000001'
UNH+CEC0000000001+COPINO:D:00B:UN:SMDG20'
BGM+104+CEC0000000001+9'
TDT+10++3+++++BI2345CD'
LOC+60+ESBIO:139:6+A95095691:72'
DTM+132:20080424120000:203'
NAD+MS+F48116032'
EQD+CN+MSCU1443442+22G0:102:5+++5'
RFF+CN+220432'
SEL+875125689'
LOC+11+NLRMT:139:6'
NAD+CF+A83728279'
NAD+SLS+CMA:172:ZZZ'
UNT+13+CEC0000000001'
UNZ+1+CEC0000000001'

*** cancelacion del preaviso anterior

UNB+UNOA:2+F48116032+A95095691+080416:1325+CEC0000000002'
UNH+CEC0000000002+COPINO:D:00B:UN:SMDG20'
BGM+104+CEC0000000002+1'
RFF+ACW:CEC0000000001'
NAD+MS+F48116032'
UNT+5+CEC0000000002'
UNZ+1+CEC0000000002'

*** preaviso de contenedor a estibador <> ATM

UNB+UNOA:2+B95484879+A48049043+080602:1117+BTL0000000003'
UNH+BTL0000000003+COPINO:D:00B:UN:SMDG20'
BGM+104+BTL0000000003+9'
TDT+10++3+++++BI2345CD'
LOC+60+ESBIO:139:6+A48049043:72'
DTM+132:20080603120000:203'
NAD+MS+B95484879'
EQD+CN+MSCU1443442+22G0:102:5+++5'
SEL+125689'
UNT+9+BTL0000000003'
UNZ+1+BTL0000000003'

*** preaviso de contenedor a CONTROL E/S A0000000

UNB+UNOA:2+B95486312+A00000000+080602:1206+TBN0000000004'
UNH+TBN0000000004+COPINO:D:00B:UN:SMDG20'
BGM+104+TBN0000000004+9'
TDT+10++3+++++0865CKL'
LOC+60+ESBIO:139:6+A00000000:72'
DTM+132:20080603120000:203'
NAD+MS+B95486312'
EQD+CN+OSOU1234578+22G0:102:5+++5'
SEL+125689'
UNT+9+TBN0000000004'
UNZ+1+TBN0000000004'

*** preaviso de recogida de mercancia general

UNB+UNOA:2+B48511836+B48063838+080602:1206+CBB00000000005'
UNH+CBB00000000005+COPINO:D:00B:UN:SMDG20'
BGM+171+CBB00000000005+9'
TDT+10++3+++++1028CMM'
LOC+60+ESBIO:139:6+B48063838:72'
DTM+132:20080603112233:203'
NAD+MS+B48511836'
EQD+BB+++++6'
UNT+8+CBB00000000005'
UNZ+1+CBB00000000005'

*** preaviso recogida contenedor

UNB+UNOA:2+B95484879+A00000000+081008:1050+BTL00000011147'
UNH+BTL00000011147+COPINO:D:00B:UN:SMDG20'
BGM+171+BTL00000011147+9'
TDT+30++3+++++4283DCM'
LOC+60+ESBIO:139:6+A00000000:72'
DTM+132:200810081120:203'
NAD+MS+B95484879'
EQD+CN+MEDU3424427+22G0:102:5+++5'
SEL+X'
UNT+9+BTL00000011147'
UNZ+1+BTL00000011147'

*** cancelacion del preaviso anterior

UNB+UNOA:2+B95484879+A00000000+081008:1126+BTL00000011173'
UNH+BTL00000011173+COPINO:D:00B:UN:SMDG20'
BGM+171+BTL00000011173+1'
RFF+ACW:BTL00000011147'
NAD+MS+B95484879'
UNT+5+BTL00000011173'
UNZ+1+BTL00000011173'

8. MAESTROS ATM